

# IoT and AI-Based Predictive Maintenance System Design for Express Auto Repair Shops

## Diseño de Sistema para la Generación de Mantenimiento Predictivo Basado en IoT e Inteligencia Artificial para Talleres de Mecánica Exprés

J.M. Heredia<sup>1</sup>  0009-0002-9431-9559

E.L. Ayala<sup>1</sup>  0000-0003-2528-4380

<sup>1</sup> Universidad Politécnica Salesiana, Cuenca, Ecuador  
E-mail: [jherediap2@est.ups.edu.ec](mailto:jherediap2@est.ups.edu.ec), [eyayala@ups.edu.ec](mailto:eyayala@ups.edu.ec)

### Abstract

The purpose of this document is to highlight the existing issue caused by a lack of knowledge about the actual condition of machinery and precise monitoring in an express mechanic workshop. This workshop consists of mechanical maintenance equipment such as vehicle lifts, balancers, aligners, and other common machinery in such work environments. The data collected from these machines are classified and processed using Artificial Intelligence, specifically Machine Learning, by employing a tabulation and interpretation algorithm alongside IoT (Internet of Things) through the instrumentation of these machines with sensors appropriate to their mechanical operation. This facilitates and enables the creation of predictive maintenance plans as well as operational schemes that help reduce operational costs, maintenance expenses, and energy consumption of the workshop equipment. The system innovatively uses a modular approach without requiring intervention or modification of the machines, allowing their interconnectivity with a computer that automatically manages the collected data. This results in a clear view of the usage of each component, providing critical information for generating predictive maintenance strategies.

**Index terms**— Optimization, IoT, Predictive Maintenance, Energy Savings, Artificial Intelligence.

### Resumen

El propósito de este documento es dar a conocer la problemática existente por una falta de conocimiento del estado real de la maquinaria y del monitoreo preciso de un taller de mecánica exprés que se compone por elementos de mantenimiento mecánico tales como elevadores de vehículos, balanceadora, alineadora, entre otras las maquinarias más comunes en este tipo de centros de trabajo, estos datos son clasificados y procesados utilizando inteligencia artificial como Machine Learning al emplear un algoritmo de tabulación e interpretación y conjuntamente IoT (internet de las cosas) a través de la instrumentación de dichas máquinas con sensores acordes a su tipo de funcionamiento mecánico, esto facilita y permite generar planes de mantenimiento predictivo al igual que esquemas operativos que permitirán disminuir el costo operacional, costos de mantenimiento y consumo energético de la indumentaria del taller, utilizando de manera innovadora un sistema modular sin necesidad de intervenir o modificar las mismas, que permite la interconectividad de la maquinaria con un ordenador que gestione la data recogida de manera automática dando como resultado una visión clara del uso de cada componente, esta información es clave para la generación de un mantenimiento predictivo.

**Palabras clave**— Optimización, IoT, Mantenimiento Predictivo, Ahorro Energético, Inteligencia Artificial.

Recibido: 31-10-2024, Aprobado tras revisión: 08-01-2025

Forma sugerida de citación: Heredia, J.; Ayala, E. (2025). "Diseño de Sistema para la Generación de Mantenimiento Predictivo Basado en IoT e Inteligencia Artificial para Talleres de Mecánica Exprés". Revista Técnica "energía". No. 21, Issue I, Pp. 81-86  
ISSN On-line: 2602-8492 - ISSN Impreso: 1390-5074

Doi: <https://doi.org/10.37116/revistaenergia.v21.n2.2025.678>

© 2025 Autores



Esta publicación está bajo una licencia internacional Creative Commons Reconocimiento – No Comercial 4.0 (<https://creativecommons.org/licenses/by-nc/4.0/>)



## 1. INTRODUCTION

In express mechanical workshops, there is a lack of control over various aspects of their operations, which leads to excessive energy consumption. This is often due to the absence of adequate maintenance plans, downtime, and logistical issues when creating new work orders. This situation is exacerbated by the lack of accurate monitoring and recording of all tasks and processes performed, so the system concept is to get all the data about the machines usage, then tabulate, process and get an clear vision about how these are running, in a period of time heading to decisions to fix the issues if they belong to machine errors or human problems. Additionally, in the current context of an energy crisis, many centers and workshops are forced to rely on combustion-powered generators to meet their electricity needs. This reliance increases costs associated with fuel, acquisition, and maintenance of such generators, highlighting the urgent need to optimize energy consumption as much as possible.

Given this issue, it is essential to develop a system that integrates operational and administrative areas. This paper presents a mechatronic solution to adapt machinery into an ecosystem that maintains accurate and automated records using IoT. These records, when analyzed with artificial intelligence (AI), enable the generation of predictive maintenance plans, which can prevent future issues that could lead to unnecessary energy costs, as an example on the automotive industry modern cars use IoT for sending data about tire pressure, the state of the oil, temperature of the motor and so forth, the data is used for planning an predictive maintenance avoiding unexpected stops and helping with the gas consumption.

Once a database of machinery operation and energy consumption is available, an alternative energy system can be better dimensioned to manage and administer electricity supplied from external sources, bypassing the public electrical grid.

As a result of implementing this system with tools such as SVM, Random Forest, and Neural Networks [1], these technologies demonstrate superior efficiency compared to similar systems in generating predictive maintenance plans [2]. The system operates by creating a database that captures the behavior of an express mechanical workshop, characterized by a high flow of vehicles that require only minor repairs or maintenance. Once this data is obtained, an AI-driven maintenance and action plan is generated, significantly improving the workshop's performance and reducing material and energy consumption, ultimately enhancing productivity.

## 2. EXPRESS MECHANICAL WORKSHOPS

An express auto repair shop is a specialized establishment on maintenance, and automotive quick repair services, the main characteristic is the kinds of generally utilizing advanced technology to optimize resources and time, that is, the vehicle does not remain in

the workshop for more than a day. These centers combine traditional mechanical services with quality control systems, digital diagnostic equipment, and, in many cases, emerging technologies such as the Internet of Things (IoT) and Artificial Intelligence (AI) tools for predictive maintenance. The main objective of an express auto repair shop is to provide efficient management that ensures the safety, performance, and durability of vehicles through professional administration of the automotive maintenance life cycle.

Unlike conventional workshops, express auto repair shops adopt preventive and predictive maintenance practices to anticipate potential failures and optimize the use of energy and material resources. These strategies are based on data analysis and the integration of cyber-physical systems, where the workshop tools can be considered intelligent components within an interconnected system [3]. In this way, the express auto repair shop functions not only as a repair space but also as an innovation hub within the automotive sector, especially in the context of the Fourth Industrial Revolution, where advanced diagnostic tools play a crucial role [4].

Also known as an automotive service center, an express auto repair shop is designed to perform preventive maintenance on vehicles, meaning that processes are carried out to prevent potential failures rather than resolve them. It is also characterized by a higher vehicle turnover compared to a traditional mechanical workshop, as the work performed typically takes no more than a couple of hours, ensuring that no vehicle remains on the premises for an entire day.

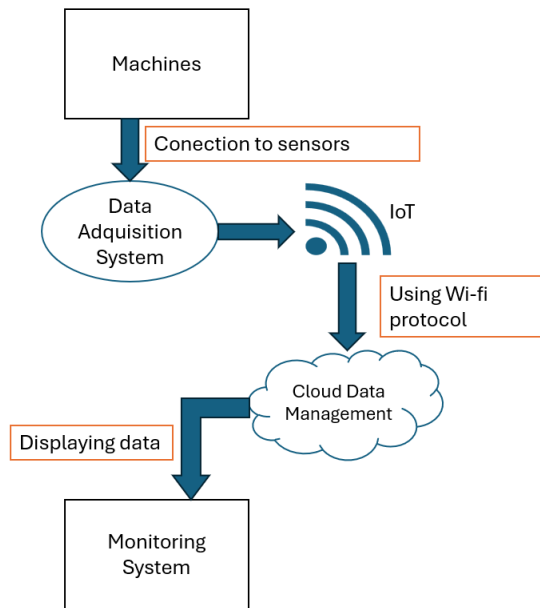
## 3. ACQUISITION DATA SYSTEM

To generate the database needed for the corresponding analysis, modules with sensors capable of accurately transmitting signals like temperature, current and proximity, that reflect the behavior and usage of the various machinery used in an express auto repair shop are utilized [5]. These modules consist of a sensor and a microprocessor with Wi-Fi connectivity, enabling data to be sent to the cloud, these devices use Wi-Fi 802.11 protocol that is the most common allowing a range of data transmission velocities from 11 up to 150 Mbps. In this way, real-time monitoring is possible, allowing data acquisition regarding the usage and performance of the machines.

In the following diagram, the operational scheme of the monitoring system is represented in a simplified manner, showing how sensors are integrated to connect to a network where devices and machinery communicate. This setup enables the display of real-time operational variables, providing insights into productivity and individual resource consumption for each device and machine used in an express auto repair shop, thus creating an intelligent system that after its application the time, as is shown on the following diagram how the



process starts from the machines working, then the sensors taking data and sending to the cloud, the data being tabulated and interpreted by AI and shown on a graphic display.



**Figure 1: IoT-Based Data Flow from Machines to Cloud Monitoring**

### 3.1 IoT applied in machinery

Each machine used must have a system that generates a usage and behavior history, as well as environmental variables that can be recorded in a computerized system.

For this purpose, IoT is applied to each machine in such a way that it integrates into the system, enabling real-time monitoring through sensors and connected networks. This allows real-time communication and monitoring of the different machines within the shop, bringing the current operation closer to an Industry 4.0 environment, where human presence is increasingly less necessary for process supervision because there is no need for a person to check on the status of the machines due to the fact that the sensors are taking care the important metrics on the devices and this is possible via IoT, all the information is process and given to the administration department with a clear guide of what is the action protocol to be done, so the only decision to be made is when to execute this plan.

If IIoT (Industrial Internet of Things) is integrated with AI, we can create a system that not only monitors the machines but, through the analysis and processing of IoT-generated data, also develops tools that facilitate decision-making and operational efficiency within the shop.

### 3.2 Data Acquisition Methodology

Since continuous machinery monitoring is necessary, specific types of sensors will be adapted to withstand the constant and intense use characteristic of work in an automotive workshop. The operational environment is also assessed, as it directly impacts the wear and tear on both the machinery and data acquisition devices, the system will evaluate the work done by timing it, then comparing with an optimal range of time database for each machine and each case like size of tire. Therefore, for each specific case, appropriate sensors are selected like for example the MAX6675 with a K-type thermocouple for temperature, the ADXL345 accelerometer for vibration monitoring, the LJ12A3-4-Z/BX inductive sensor for proximity detection, and the Honeywell Micro Switch V7 for mechanical position sensing, along with the necessary microprocessor or embedded chip, to enable unidirectional communication between the devices and the control and monitoring system using an Wi-Fi protocol to send all the data to a private cloud.

### 4. DATA MANAGEMENT AND ANALYSIS

The data received from the cloud will undergo a series of mathematical algorithms that tabulate, classify, and process the data to be presented in a graphical environment, facilitating understanding and analysis.

AI is used for post-processing this data, analyzing the results to determine a methodology or guideline for correctly and specifically applying predictive maintenance in this case study. This approach enables a complete analysis of the workflow without the need for direct personnel intervention and without invasive access to the machinery, thus avoiding downtime and saving administrative costs [6], reducing the response time and planning time that takes to generate a predictive maintenance plan, so this result translates on higher productivity because the repair stops are planned ahead, so all the process reflects on a better stat of the number of services given to the customers.

### 5. PREDICTIVE MAINTENANCE USING AI

Artificial Intelligence (AI) is a highly important technology in engineering, as it enables various approaches to solving specific issues. This solution framework is built on tools such as SVM, Random Forest, and Neural Networks, which can be used through IoT. By employing this methodology for data management and analysis, predictive maintenance can be applied. Through continuous analysis of machinery behavior, a history is generated. By setting thresholds, potential failures can be accurately predicted. With knowledge of the impending fault and its cause, a predictive maintenance plan can be created, saving both energy consumption and various costs that a failure would incur.



Allowing AI to generate responses and make decisions by considering all variables improves operational dependency, as quick responses and an efficient action plan are obtained to address all aspects involved in a potential failure [7].

This process of analysis and decision-making based on all established and input variables is managed under a scheme where data is first standardized. Then, the data is processed under specific guidelines, such as legal requirements, operating regulations, AI predictions, and simulation tools. This approach generates operational messages, which are the results of AI after analyzing the database and creates an automated operation program that includes the predictive maintenance plan and the allocation of material and energy resources. This scheme, in general terms, is represented in the following diagram.

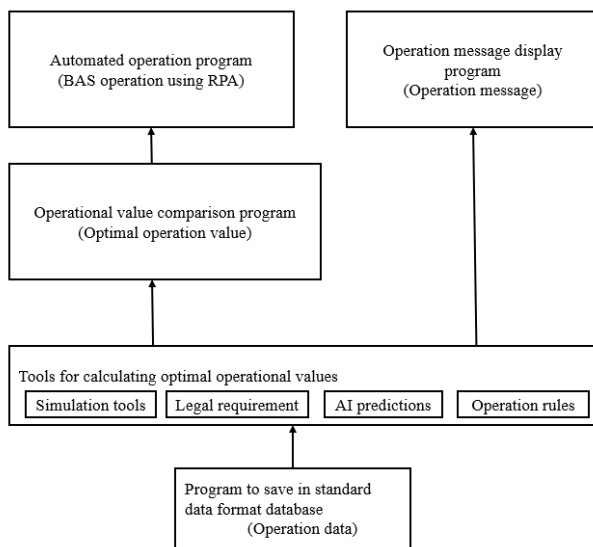


Figure 2: Workflow Scheme in the Software Component [6]

Since this algorithm is followed, one of the three tools with the best performance for generating predictive maintenance plans—SVM, Random Forest, and Neural Networks—is used. The table below shows their superior effectiveness compared to other Machine Learning tools.

Table 1: The performance of machine learning models in predictive maintenance [1]

Model	Precision	Recall	F1-Score	Accuracy	AUC-ROC
Support Vector Machine (SVM)	0.91	0.89	0.90	0.92	0.93
Random forest	0.94	0.93	0.93	0.94	0.95
Neural networks	0.92	0.91	0.91	0.93	0.94
Logistic regression	0.88	0.86	0.87	0.89	0.90
Gradient boosting	0.93	0.92	0.92	0.93	0.94

This table allows us to assess the accuracy and effectiveness based on relevant indicators regarding the performance of each Machine Learning tool when creating logistics and planning for efficient predictive maintenance.

Using these tools, a specific operational scheme is developed that incorporates the predictive maintenance plan based on each machine’s behavior data. The integration of AI and databases revolutionizes data management, enabling automated decision-making and efficient processing of large datasets. AI analyzes patterns and predicts outcomes, while databases provide robust infrastructure for data storage and access. This synergy drives innovation, improves operational efficiency, enhances automation, and optimizes decision-making across industries and diverse applications. The interaction between the software and this data is as follows:

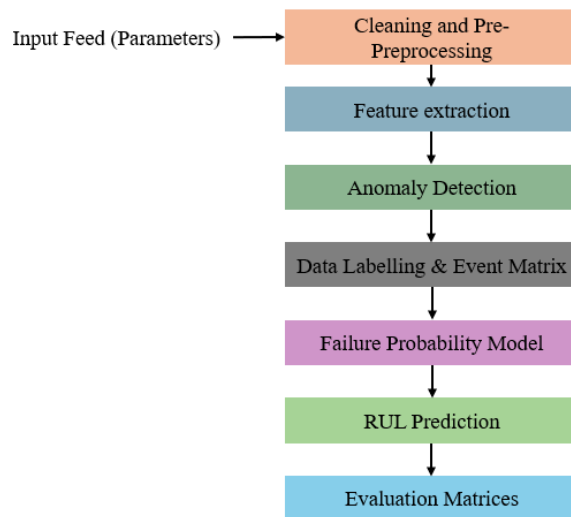


Figure 3: Operational Steps of the Prediction Model [8]

In this way, the generated database is continuously processed, resulting in real-time monitoring of the express auto repair shop’s performance. This allows for the determination of the need to apply predictive maintenance, when necessary, thanks to the anticipation of events provided by the IoT system combined with Machine Learning and the data acquisition ecosystem integrated within the shop.

## 6. ENERGY CONSUMPTION OPTIMIZATION

The results of predictive maintenance and monitoring in an express auto repair shop are reflected in energy savings achieved through process optimization and the prediction of potential issues, such as failures, unexpected shutdowns, and downtime. This ensures a constant workflow, generating higher profits with reduced energy consumption.



As shown in the table below, a case study on a vehicle mechanic workshop illustrates the results in terms of energy savings when applying Machine Learning to maintenance and process management and various metrics that are evidence of the improvement that means applicate a system like this [9].

**Table 2: Comparison of performance in terms of energy consumption [1]**

Metric	Before Implementation	After implementation	Percentage reduction (%)
Average equipment downtime (hours/month)	15,40	8,20	0,47
Emergency repair instances (per year)	25,00	10,00	0,60
Energy consumption for repairs (MWH/year)	150,00	90,00	0,40
Maintenance cists (USD/year)	500,00	320,00	0,36
Operational efficiency (%)	82,50	91,20	0,08

This allows us to confirm the effectiveness of using Machine Learning and IoT in an integrated system to optimize the operations of an express auto repair shop, reducing its energy consumption. The energy results derivates from a better management, for example after applying an system of this kind the uptime increases on a 90% to 95%, the failure rate gets from 5 to 2 cases monthly and also the Mean Time Between Failures (MTBF) increases from 200 hours to 400 hours [10], these parameters are evidence of the interaction between IoT and ML on a system, the dynamic that involve these two tools is described in five stages:

- 1- Data recollection.
- 2- Feature engineering
- 3- Algorithm selection and training
- 4- Deployment and integration
- 5- Continuous Learning

## 7. SYSTEM INTEGRATION IN AN EXPRESS AUTO REPAIR SHOP

The synergy between all parts of the proposed system and the elements (machinery and workshop staff) that make up the express auto repair shop is achieved through administrative actions based on the results of the AI-implemented algorithm. Once the analysis is generated, the administrative department creates an action plan that includes specific work protocols and a maintenance plan for each machine. Additionally, training sessions or new

operational methods are organized to improve and coordinate the workshop staff [11].

Monitoring each station in the express auto repair shop allows for behavior analysis over time, revealing types of failures—whether operator errors or machine faults. The model is trained after entering a complete database about the acceptable timing taken for a worker to complete an specific activity, for example there is a range of time for taking out a pneumatic from a rim, so when a machine is activated a timer will star and then this timer will be compared with an optimal time range so in that way can be determinate if the operation was done correctly and efficient. Once identified, a record is created, and a learning system is applied to automatically recognize failure trends and predict when they may occur. This enables time for planning and proactive action, resulting in a continuous workflow without unexpected stoppages or temporary interruptions in the shop's service.

## 8. CONCLUSIONS AND RECOMMENDATIONS

As a result, implementing a system that enables real-time monitoring and, at set intervals, generates an automatic analysis of the management and performance of an express auto repair shop provides a comprehensive positive outcome like reducing the respond times and inactivity, increasing the overall productivity and reducing the maintenance general costs. This system impacts both the administrative and workshop areas, creating continuous communication channels that facilitate decision-making backed by an AI system that accurately predicts upcoming failures and creates predictive maintenance plans, the benefits proved by Easy-Manit is the reduction of repair costs by predicting problems and planning with time the necessary stops. The administrative department gets the advantage to get directly the information of the status of the workshop, not only regarding the machinery component also includes the human resources, facilitating the analysis, and management of resources in general based on trustful automatically generated information. This reduces operational costs and promotes efficient management of energy resources, making it an innovative project that enhances the shop's productivity and provides a sustainable response to the country's current energy crisis.

As a recommendation is imperative to create an own database with the timings of the workers on an specific workshop because these metrics will variate depending on the training and expertise of the human resources of each worshop.

## REFERENCIAS BIBLIOGRÁFICAS

- [1] J. C. Cruz y A. M. Garcia, "Machine Learning for Predictive Maintenance to Enhance Energy Efficiency in Industrial Operations," *Information Technology Engineering Journals (ITEJ)*, vol. 9, no. 1, pp. 15–22, 2024.



- [2] F. Artkin, "Applications of Artificial Intelligence in Mechanical Engineering," *European Journal of Science and Technology*, vol. 45, pp. 159–163, 2022.
- [3] J. H. Rodríguez Ovalle y L. M. Dávila García, "Gestión del mantenimiento automotriz: Un acercamiento al mantenimiento preventivo 4.0 y los carros conectados," *Escuela Colombiana de Ingeniería Julio Garavito*, 2020. Disponible en: <https://catalogo.escuelaing.edu.co>.
- [4] "CDPA: Centro de Desarrollo Productivo de Mantenimiento Automotriz Estrategia para la competitividad de la microempresa," *Revista Científica de la Universidad del Norte*, 2020. Disponible en: <https://rcientificas.uninorte.edu.co>.
- [5] K. D. P. Mariano, F. L. N. Almada, y M. A. Dutra, "Smart Air Quality Monitoring for Automotive Workshop Environments," *Institute of Informatics – Federal University of Goiás (UFG), Goiânia – GO, Brazil*, 2024.
- [6] A. Petrov y I. Novak, "Optimization of Industrial Energy Efficiency Through the Application of Advanced Process Control, Monitoring Technologies, and Predictive Maintenance," *Eigenpub Review of Science and Technology*, vol. 6, no. 1, pp. 1–10, 2022.
- [7] M. Soori, F. K. Ghaleh Jough, R. Dastres, y B. Arezoo, "AI-Based Decision Support Systems in Industry 4.0, A Review," *Journal of Economy and Technology*, 2024.
- [8] T. Yamamoto, H. Hayama, T. Hayashi, y T. Mori, "Automatic Energy-Saving Operations System Using Robotic Process Automation," *Energies*, vol. 13, no. 2342, pp. 1–14, 2020.
- [9] S. Thomas, A. O. Philip, y N. Vishwanath, "ML Based Data Driven Energy Centered Predictive Maintenance," *Proceedings of the Second International Conference on Edge Computing and Applications (ICECAA 2023)*, vol. 2, pp. 994–1003, 2023.
- [10] A. P., N. Chouhan, G. A. Chandhok, D. Sugumaran, U. Aswal, and S. A., "Empowering IoT Devices with Energy-Efficient AI and Machine Learning," *2024 International Conference on Circuit Power and Computing Technologies (ICCPCT)*, DOI: 10.1109/ICCPCT61902.2024.10672916.
- [11] S. Gennitsaris et al., "Energy Efficiency Management in Small and Medium-Sized Enterprises: Current Situation, Case Studies and Best Practices," *Sustainability*, vol. 15, no. 3727, pp. 1–26, 2023. [11] J. O. Williams, "Narrow-band analyzer," Ph.D. dissertation, Dept. Elect. Eng., Harvard Univ., Cambridge, MA, 1993.



**Johnny Mateo Heredia.**- Born in Cuenca, Ecuador on 2001. Mechatronic engineering last semester student, IEEE member.



**Edy Ayala.** - Born in Cuenca, Ecuador, in 1987. He holds a Ph.D. in Engineering Sciences from the Faculty of Mechatronics at the University of Ferrara in Italy, a master's in engineering sciences from Swinburne University in Australia, a Bachelor's degree in Electronic Engineering from Universidad Politécnica Salesiana, and a Diploma in Industrial Electronics from Universidad Politécnica Salesiana. He is a Research Professor with experience in research projects in the fields of Energy, Assistive Technologies, and Electronics. In 2010, he received the José Peralta Award from the Prefecture of Azuay for his development of automated irrigation projects.